

Name:

Class:

Date:

A Working scientifically

(Teacher assessed during practical, experimental and investigational work: up to a maximum of 6 points)

KS2 1

KS2 2

KS2 3

KS2 4

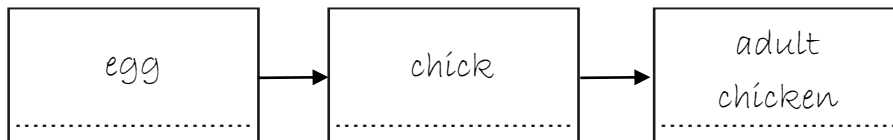
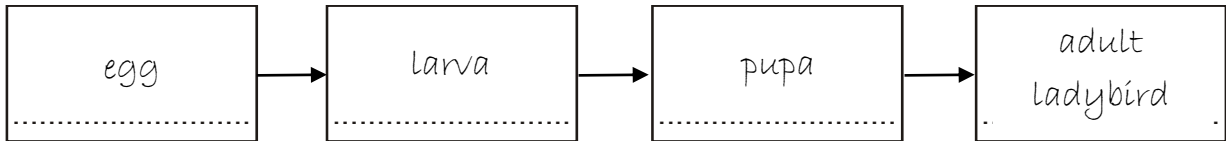
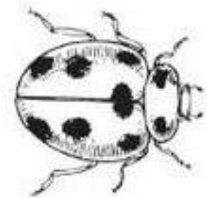
KS2 5

KS2 6

Total

B Living things, animals and humans

1. Here are the life cycles of a ladybird (**insect**) and a chicken (**bird**).



1a. The life cycles are **similar** in some ways. Give **ONE** way.



.....

.....

.....

1b. The life cycles are **different** in some ways. Give **ONE** way.



.....

.....

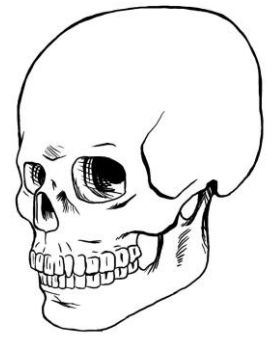
.....

2. Here is a drawing of a human skull. It helps to **protect** the brain.

2a. Which part of the skeleton protects the **heart** and **lungs**?



.....



2b. As well as protection, what else does the skeleton do for us?

Give **ONE** other function.



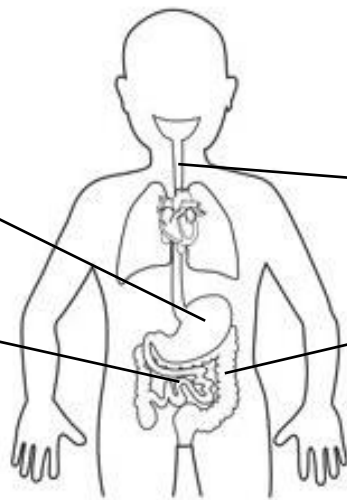
.....

.....



KS2 7 (3:12)

3a. Label the parts of the **digestive system** shown below. One has been done for you.



3b. What is the function of the **stomach**?



.....

.....



KS2 7 (4:10)

4. Match the parts of the **circulatory system** to their function.

Arteries

Carry blood back to the heart.

Capillaries

Pump blood around the body.

Veins

Carry blood from the heart to the body cells.

Heart

Join the arteries to the veins.



KS2 7 (6:10/11)

5a. Peter is overweight. He decides to have a healthier lifestyle.
He cuts down on the amount of sweets and fatty foods he eats.
He spends less time on his computer and goes for bike rides instead.

Give **TWO** benefits this will have on Peter's body.



.....
.....
.....



5b. Why should you **NEVER** start to **smoke**?



.....
.....



KS2 8 (6:13)

6. Show what job each part of a plant does. One has been done for you.



petal

root

leaf

stem

attracts insects

makes food from sunlight

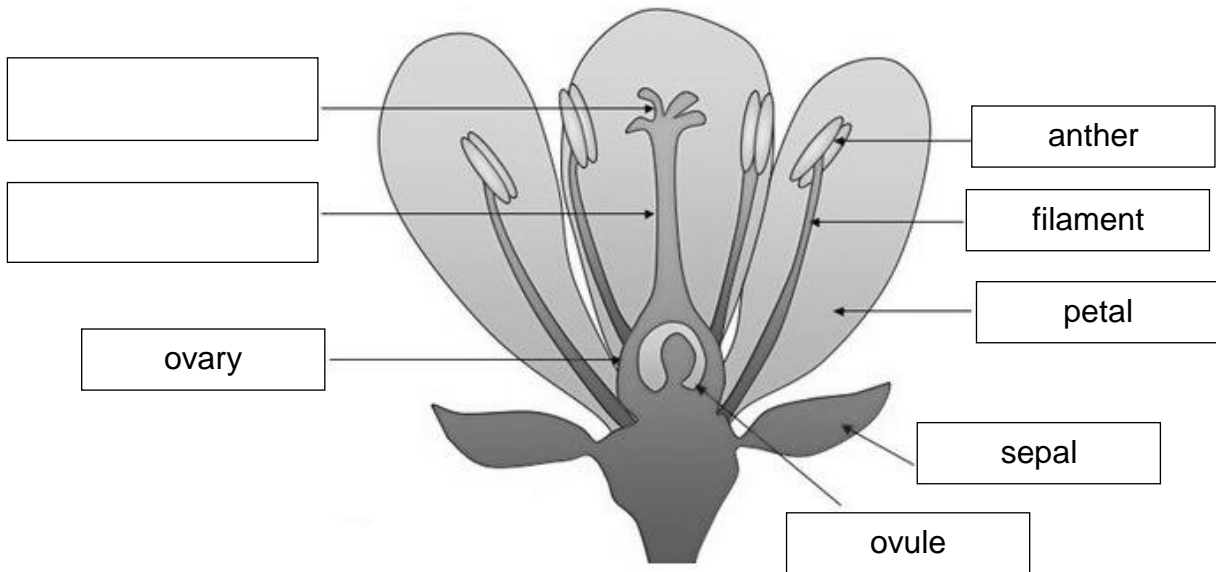
supports the plant

takes up water and nutrients



KS2 9 (3:7)

7. Here are the parts of a flowering plant that are used in **reproduction**.



7a. Fill in the missing **female parts** of the plant which make up the **pistil**.

7b. Which **two** parts of the flower are the **male parts** which make up the **stamen**?



.....

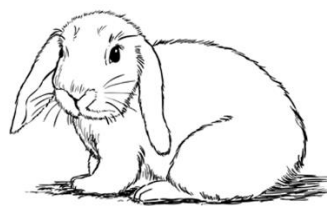


KS2 9 (5:8)

8. Look at the living things below.



cat



rabbit



bat

8a. Which animal group do they all belong to?



.....

8b. Describe **TWO** characteristics of **ALL** animals in this group.



.....

.....



KS2 10 (6:7)

9. Some children went pond dipping and caught these creatures.

9a. Write in the missing question on the key below.

9b. Write the names of the creatures on the identification key below.



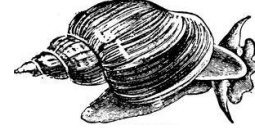
tadpole



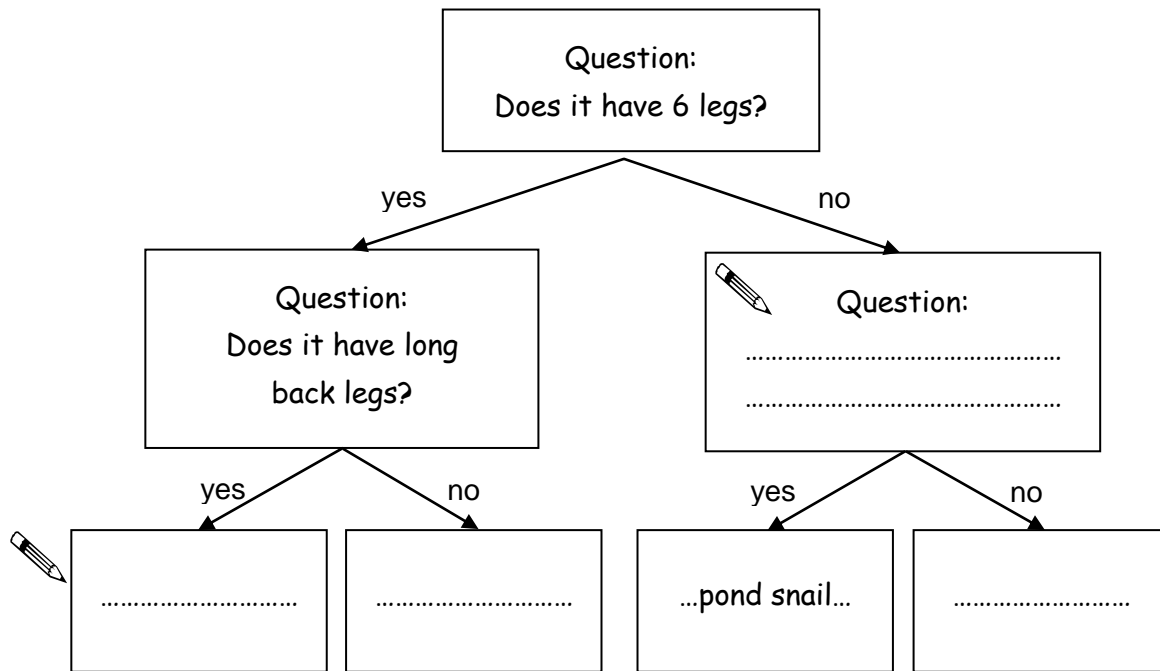
water boatman



damselfly nymph

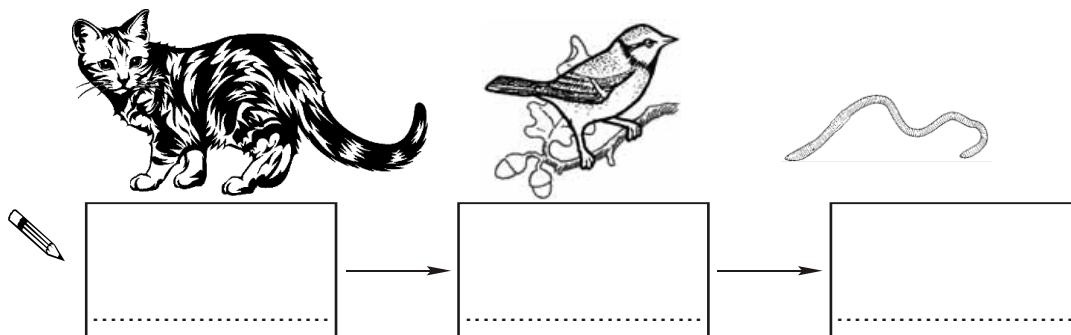


pond snail



KS2 10 (4:8)

10a. **Cats eat birds** and **birds eat worms**. Show this on the food chain below.



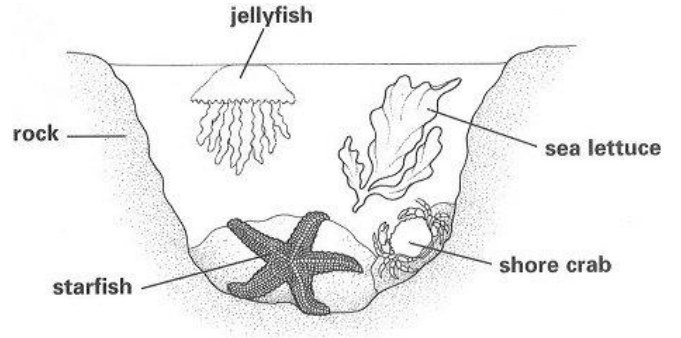
10b. Which animal is the bird's prey?

.....



KS2 11 (4:12)

11. Sam finds a starfish in a rock pool.
He takes it to show his dad.
He then carefully returns the starfish.



Why is it important that he returns the starfish to the rock pool?



.....

.....

.....

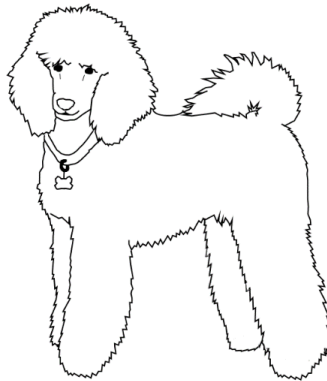


KS2 12 (4:9)

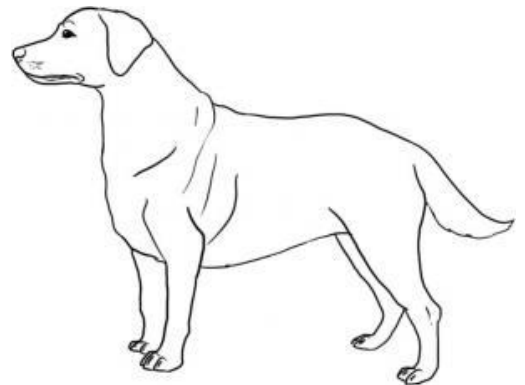
12. Millie is a Labradoodle puppy. Her mum is a Poodle and dad is a Labrador.



Labradoodle



Poodle



Labrador

Millie has some of her mum's features and some of her dad's. Explain how.



.....

.....

.....

.....

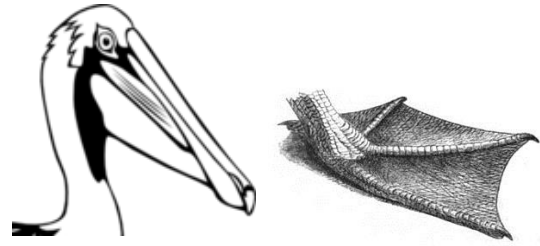


KS2 13 (6:15)

13. Here are some drawings of the head and feet of an **eagle** and a **pelican**.



eagle



pelican

Both birds eat a lot of **fish** but catch them differently.

How have they **adapted** to suit the way they feed?

Describe at least **TWO** adaptations.



.....

.....

.....

.....



KS2 13 (6:16)

14. **Fossils** can provide a lot of information about things that lived a very long time ago.

Tick **TWO** boxes to show what fossils can tell us about animals from the past.

Where they lived and how big they were.

What colour the creatures were.

How species have evolved and adapted over time.

What noise they made and how they sounded.



KS2 13 (6:14)

C Materials

15a. Group the objects below according to the properties shown. One has been done for you.

transparent

translucent

opaque



glass



plastic bowl



oven glove



baking tray



milk carton

15b. Which of the objects above will be the best **thermal insulator**?



.....

KS2 14 (5:10)

16. Why is metal a good material for the baking tray? Give **TWO** reasons.



.....

.....

.....

KS2 14 (5:11)

17a. Tick **ONE** box in each row to make the statements true.

Statement	Solid	Liquid	Gas
It takes the shape of its container.			
It keeps its own shape.			
It spreads to fill any sealed container.			

KS2 15 (4:13)